

MAKE A FLOPPY WITH WINIMAGE

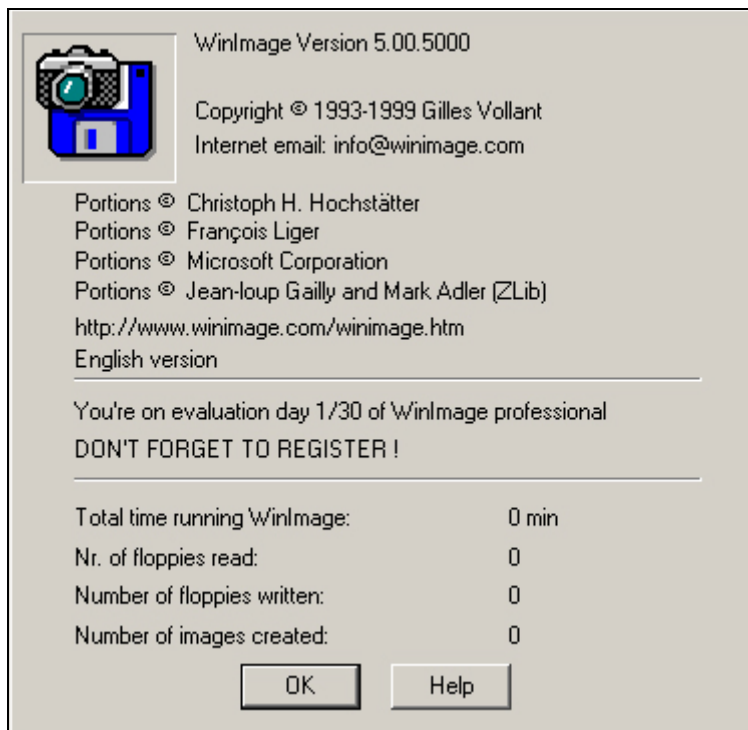
How to write a floppy disk with Winimage

Required:

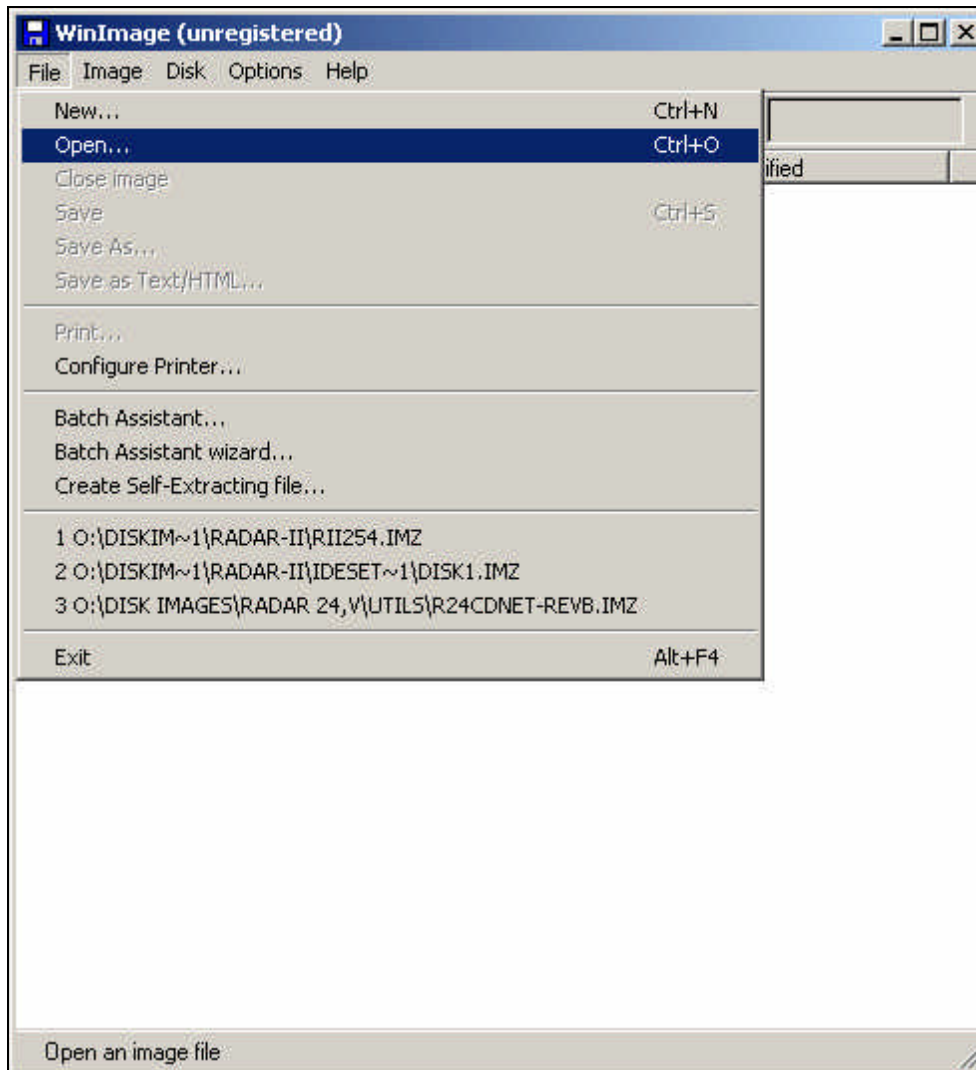
- PC with Windows OS and floppy drive
- Winimage software (www.winimage.com)
- RADAR Winimage file such as **R24CDNET_RevB.imz**
- 3.5" Floppy Diskette

Procedure:

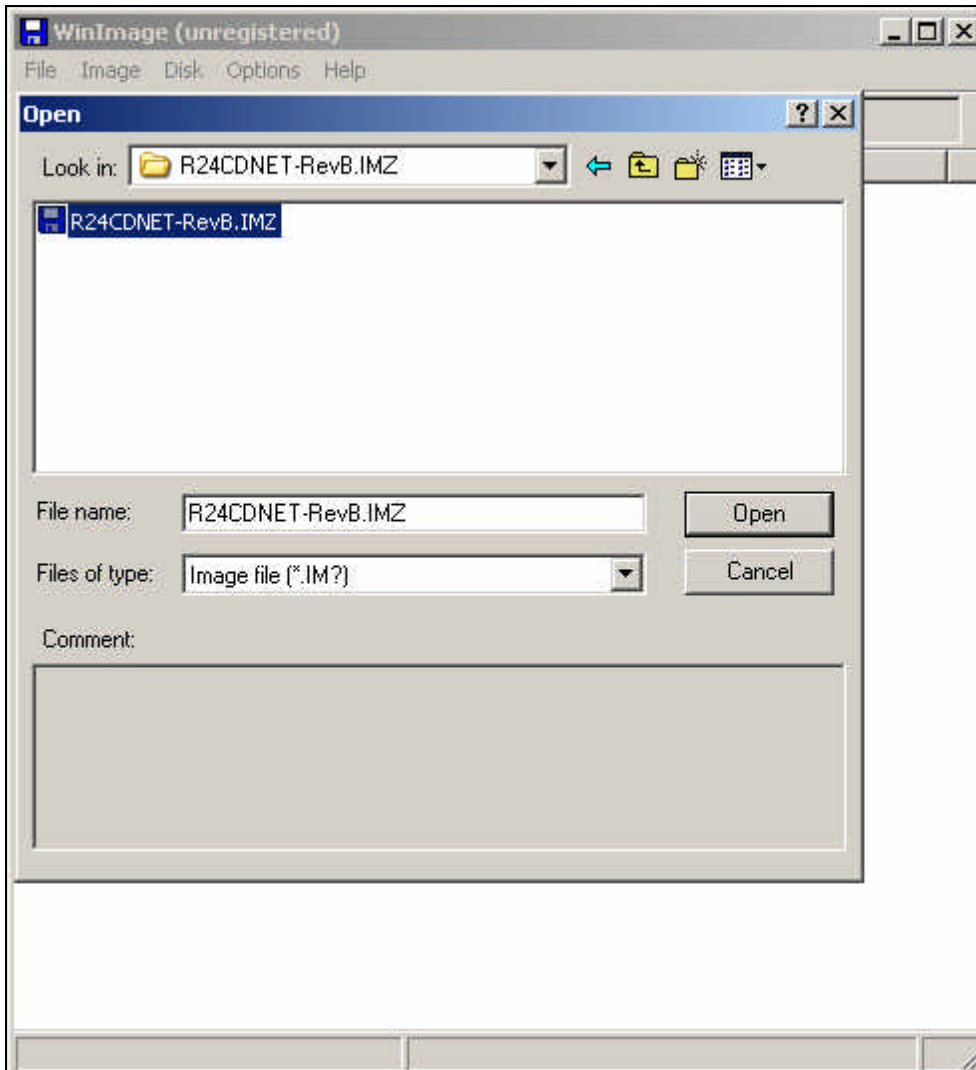
- 1 Move the write-protect label to the closed position on the floppy diskette.
- 2 Insert the floppy diskette in the floppy drive on the PC.
- 3 Double click on the **WINIMAGE.EXE** file. Click **OK** on the popup.



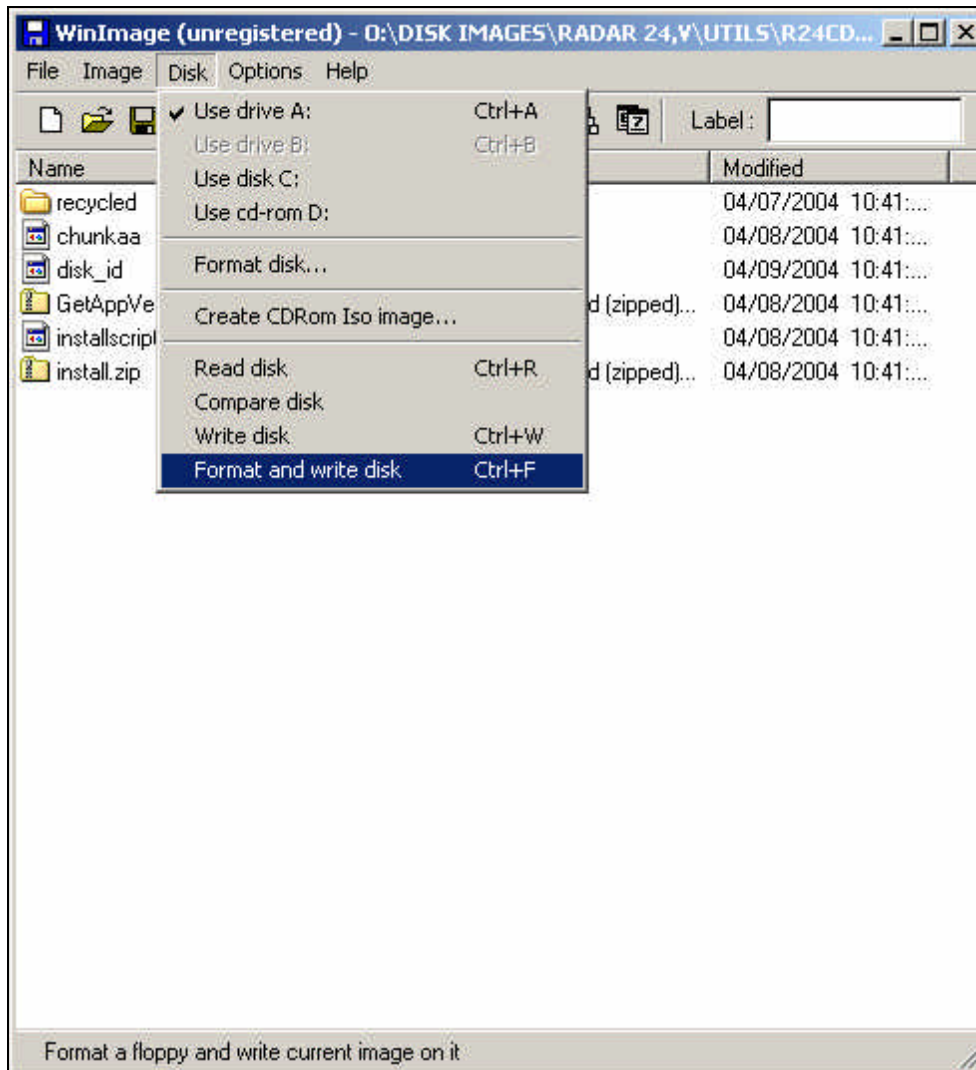
- 4 Click on **FILE** at the top and select **OPEN**.



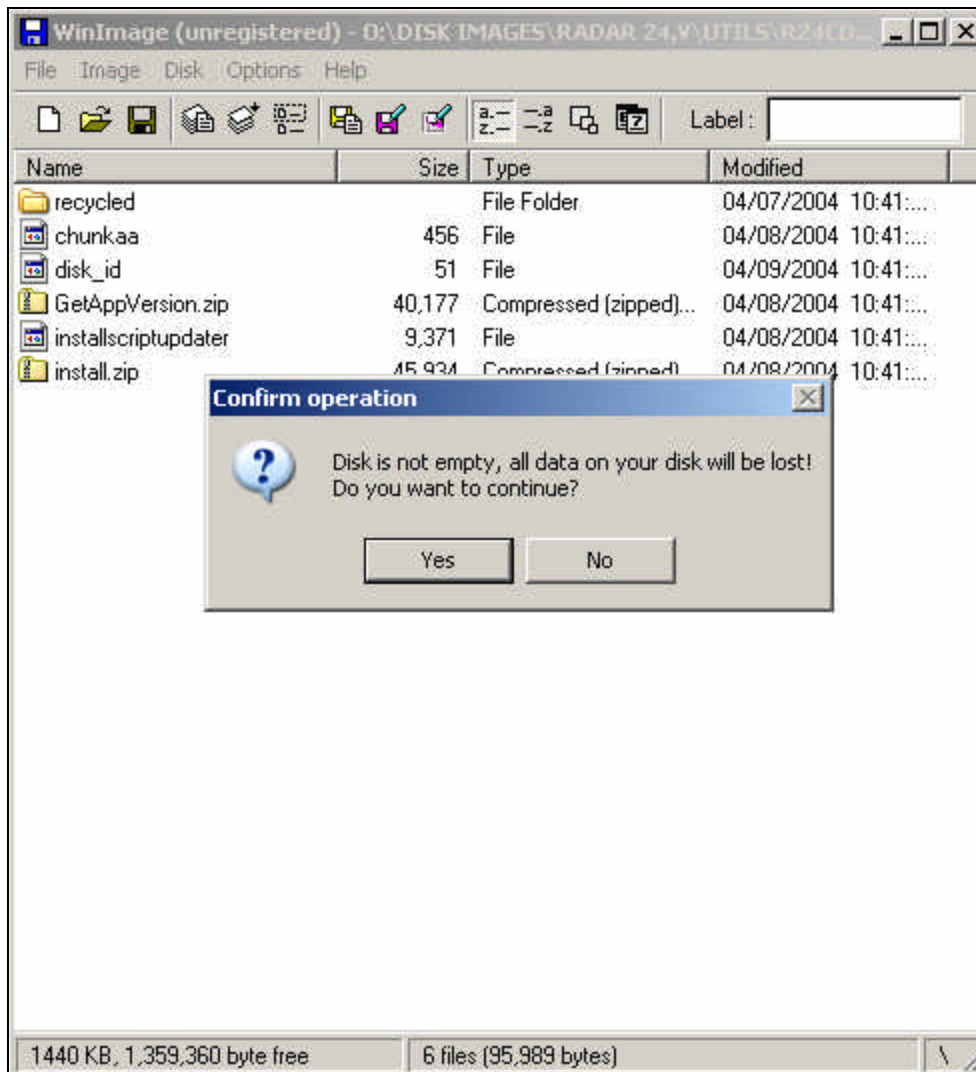
- 5 Navigate to the image file to write and click **OPEN**.



- 6 Click on **DISK** at the top and select **FORMAT AND WRITE DISK**.



- 7 Click **YES** on the **CONFIRM OPERATION** popup.



- 8 A **FORMATTING AND WRITING DISK** popup will indicate the % finished. Once it is completed it will drop back to the main window which can then be closed.

